

# Microline

7 x 7 Chain



## Body

Surface mounted modular flexible LED system in extruded aluminium.

Available in different length configurations based on 49mm link with increment of 59mm.

Section 7x7mm.

Mounting options:

Integrated magnets for easy installation.

L mounting brackets.

U mounting clips.

**\* Plastic free packaging.**

## Accessories

Mounting accessories included.

Power extension cable Art. 2D58 to be ordered separately.

## Finish

Anodized black, white, brass polished, gold or aluminium finish. Other finish options available on request.

## LED sources

SMD.

CRI: 93, 95 & 97 | R9: >90 | CCT: 1800K, 2200K, 2400K, 2700K, 3000K, 3500K, 4000K.

3-Step MacAdam.

Other CRI and CCT options available on request.

## Optic

Extra Wide Beam Angle.

Opal Diffuser (OD).

Lenticular Transparent Diffuser (TD).

Opal Rigid Diffuser (RD).

## Driver

Driver not included to be ordered separately.

Work with 24V Constant Voltage Driver positioned remotely.

## Applications

Curvaceous miniature linear light with a disappearing look delivers an homogenous and diffuse light effect, making it the ideal product for showcase and under cabinet illumination.

Application areas: Retail, cabinet displays, showcases, jewelry displays, residential, restaurants, museums.

## Related Products

**Microline  
7 x 7**



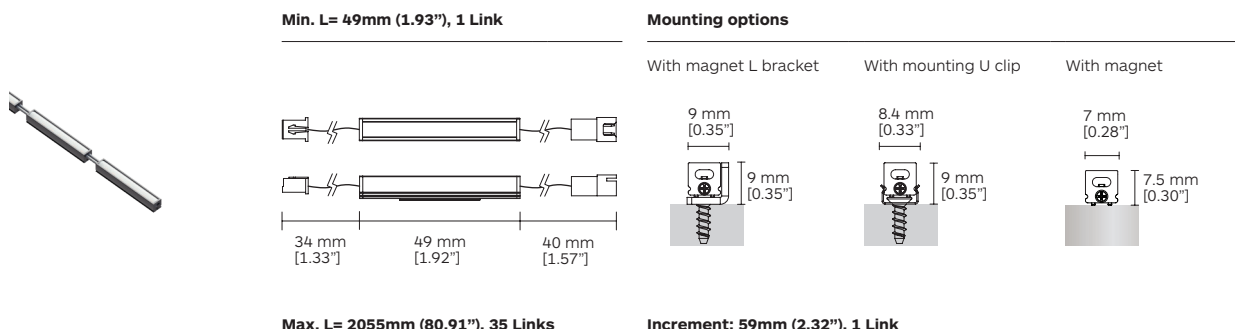
**Microline  
7 x 7 Corner**



**Microline  
7 x 7 Corner  
Chain**



# Microline 7 x 7 Chain | 0.72W/Link & 0.63W/Link | G442



## Available length codes <sup>1</sup>

No. of Links	LED Power	Length code	Length in mm	Length in inches	Nominal Lumen	No. of Links	LED Power	Length code	Length in mm	Length in inches	Nominal Lumen
1	0.72W	<b>0049</b>	49	1.93	73 lm	19	13.68W	<b>1111</b>	1111	43.74	1387 lm
2	1.44W	<b>0108</b>	108	4.25	146 lm	20	14.40W	<b>1170</b>	1170	46.06	1460 lm
3	2.16W	<b>0167</b>	167	6.57	219 lm	21	15.12W	<b>1229</b>	1229	48.39	1533 lm
4	2.88W	<b>0226</b>	226	8.90	292 lm	22	15.84W	<b>1288</b>	1288	50.71	1606 lm
5	3.60W	<b>0285</b>	285	11.22	365 lm	23	16.56W	<b>1347</b>	1347	53.03	1679 lm
6	4.32W	<b>0344</b>	344	13.54	438 lm	24	17.28W	<b>1406</b>	1406	55.35	1752 lm
7	5.04W	<b>0403</b>	403	15.87	511 lm	25	18W	<b>1465</b>	1465	57.68	1825 lm
8	5.76W	<b>0462</b>	462	18.19	584 lm	26	18.72W	<b>1524</b>	1524	60.00	1898 lm
9	6.48W	<b>0521</b>	521	20.51	657 lm	27	19.44W	<b>1583</b>	1583	62.32	1971 lm
10	7.20W	<b>0580</b>	580	22.83	730 lm	28	20.16W	<b>1642</b>	1642	64.65	2044 lm
11	7.92W	<b>0639</b>	639	25.16	803 lm	29	20.88W	<b>1701</b>	1701	66.97	2117 lm
12	8.64W	<b>0698</b>	698	27.48	876 lm	30	21.60W	<b>1760</b>	1760	69.29	2190 lm
13	9.36W	<b>0757</b>	757	29.80	949 lm	31	22.32W	<b>1819</b>	1819	71.61	2263 lm
14	10.08W	<b>0816</b>	816	32.13	1022 lm	32	23.04W	<b>1878</b>	1878	73.94	2336 lm
15	10.80W	<b>0875</b>	875	34.45	1095 lm	33	23.76W	<b>1937</b>	1937	76.26	2409 lm
16	11.52W	<b>0934</b>	934	36.77	1168 lm	34	24.48W	<b>1996</b>	1996	78.58	2482 lm
17	12.24W	<b>0993</b>	993	39.09	1241 lm	35	25.20W	<b>2055</b>	2055	80.91	2555 lm
18	12.96W	<b>1052</b>	1052	41.42	1314 lm						

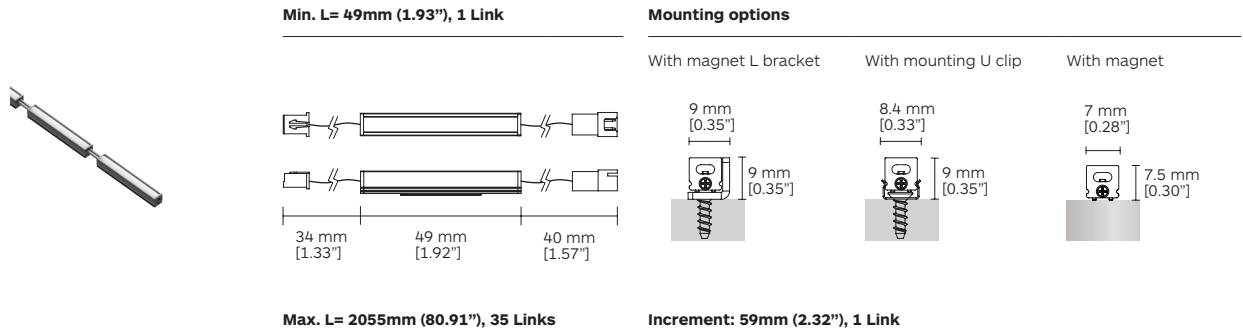
Code ordering example: **G 4 4 2 0 0 4 9 - 9 7 2 7 O D 0 0 1 0**

	Product code*	Length code***	>CRI	CCT**	LED Power	Nominal Lumen	Diffuser	Light Source Code	Finish	
Microline 7 x 7 Chain	<b>G442</b>	Min. <b>0049</b>	<b>97</b>	<b>27</b> 2700K	0.72W/Link	69 lm/Link	<b>OD</b>	<b>00</b>	<b>10</b> ■ Black	
		⋮		<b>30</b> 3000K		73 lm/Link			<b>TD</b>	<b>11</b> □ White
		Max. <b>2055</b>		<b>35</b> 3500K		74 lm/Link			<b>RD</b>	<b>28</b> ■ Brass Polished
				<b>40</b> 4000K		75 lm/Link				<b>35</b> ■ Gold
			<b>93</b>	<b>18</b> 1800K	0.63W/Link	43 lm/Link		<b>3Y</b>	<b>70</b> ■ Aluminium	
				<b>22</b> 2200K		51 lm/Link				
				<b>95</b>	<b>24</b> 2400K		54 lm/Link			

### Notes:

<sup>1</sup> Information in the chart above is related to 3000K LED.

# Microline 7 x 7 Chain | 0.63W/Link | G476



## Available length codes <sup>1</sup>

No. of Links	LED Power	Length code	Length in mm	Length in inches	Nominal Lumen	No. of Links	LED Power	Length code	Length in mm	Length in inches	Nominal Lumen
1	0.63W	<b>0049</b>	49	1.93	63 lm	19	11.97W	<b>1111</b>	1111	43.74	1197 lm
2	1.26W	<b>0108</b>	108	4.25	126 lm	20	12.60W	<b>1170</b>	1170	46.06	1260 lm
3	1.89W	<b>0167</b>	167	6.57	189 lm	21	13.23W	<b>1229</b>	1229	48.39	1323 lm
4	2.52W	<b>0226</b>	226	8.90	252 lm	22	13.86W	<b>1288</b>	1288	50.71	1386 lm
5	3.15W	<b>0285</b>	285	11.22	315 lm	23	14.49W	<b>1347</b>	1347	53.03	1449 lm
6	3.78W	<b>0344</b>	344	13.54	378 lm	24	15.12W	<b>1406</b>	1406	55.35	1512 lm
7	4.41W	<b>0403</b>	403	15.87	441 lm	25	15.75W	<b>1465</b>	1465	57.68	1575 lm
8	5.04W	<b>0462</b>	462	18.19	504 lm	26	16.38W	<b>1524</b>	1524	60.00	1638 lm
9	5.67W	<b>0521</b>	521	20.51	567 lm	27	17.01W	<b>1583</b>	1583	62.32	1701 lm
10	6.30W	<b>0580</b>	580	22.83	630 lm	28	17.64W	<b>1642</b>	1642	64.65	1764 lm
11	6.93W	<b>0639</b>	639	25.16	693 lm	29	18.27W	<b>1701</b>	1701	66.97	1827 lm
12	7.56W	<b>0698</b>	698	27.48	756 lm	30	18.90W	<b>1760</b>	1760	69.29	1890 lm
13	8.19W	<b>0757</b>	757	29.80	819 lm	31	19.53W	<b>1819</b>	1819	71.61	1953 lm
14	8.82W	<b>0816</b>	816	32.13	882 lm	32	20.16W	<b>1878</b>	1878	73.94	2016 lm
15	9.45W	<b>0875</b>	875	34.45	945 lm	33	20.79W	<b>1937</b>	1937	76.26	2079 lm
16	10.08W	<b>0934</b>	934	36.77	1008 lm	34	21.42W	<b>1996</b>	1996	78.58	2142 lm
17	10.71W	<b>0993</b>	993	39.09	1071 lm	35	22.05W	<b>2055</b>	2055	80.91	2205 lm
18	11.34W	<b>1052</b>	1052	41.42	1134 lm						

Code ordering example: **G 4 7 6 0 0 4 9 - 9 7 2 7 O D 0 0 1 0**

	Product code*	Length code***	>CRI	CCT**	LED Power	Nominal Lumen	Diffuser	Light Source Code	Finish	
Microline 7 x 7 Chain	<b>G476</b>	Min. <b>0049</b>	<b>97</b>	<b>27</b> 2700K	0.63W/Link	62 lm/Link	<b>OD</b>	<b>00</b>	<b>10</b> ■ Black	
		⋮		<b>30</b> 3000K		63 lm/Link			<b>TD</b>	<b>11</b> □ White
		Max. <b>2055</b>		<b>35</b> 3500K		65 lm/Link			<b>RD</b>	<b>28</b> ■ Brass Polished
				<b>40</b> 4000K		66 lm/Link				<b>35</b> ■ Gold
								<b>70</b> ■ Aluminium		

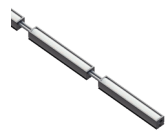
### Notes:

<sup>1</sup> Information in the chart above is related to 3000K LED.

# Driver Options

## Constant Voltage

### Microline 7 x 7 Chain

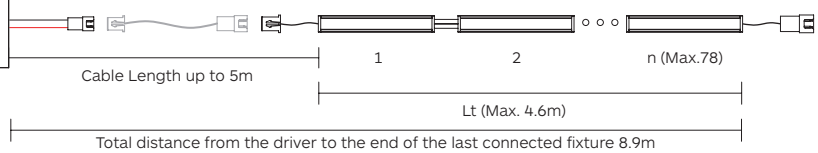


L  
N  
Dim

Art. 2V24D0 (On/Off)  
Art. 2V24D1 (0-10V)  
Art. 2V24DA (DALI)

2V24 Constant Voltage LED Driver. 1 Driver for Maximum 78 links, about 4.6m long fixtures.

Power extension cable



### G442 / G476

Power extension cable. Art. **2D58**. 1m (if necessary).

Vin= 90~305V AC 50/60Hz  
Vout= 24VDC 2.5A 60W Max.  
Dimensions: 150x53x35mm  
IP20