



formalighting

# **Zero Framing Projector Series**

**2025**

# Zero Framing Projector Series

# Zero Framing Projector

Collected Light Exhibition. Milan 2023

Cascina Cuccagna - formalighting's Demo Room featuring the high performance  
Zero Framing Projector 85 and Zero Framing Projector 38.

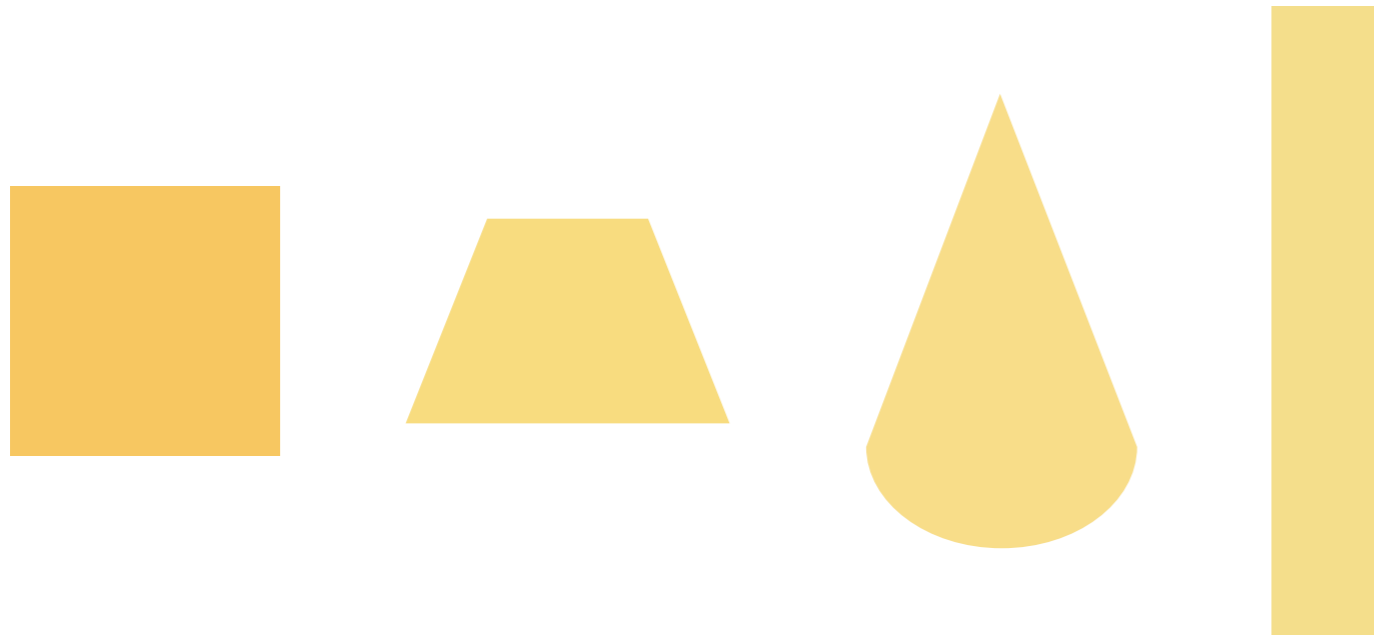
The hero of formalighting's track-mounted range for museums and galleries, for the professional illumination of objects, with high precision optics and sharp outlines.

An advanced multifunctional projector with built-in bidirectional zooming lens with sharpness adjustability and lens rotation. Also compatible with Gobo Insertion.

Available for EURO Track, Low Voltage Track, Semi-Recessed, and Surface Mounted versions.

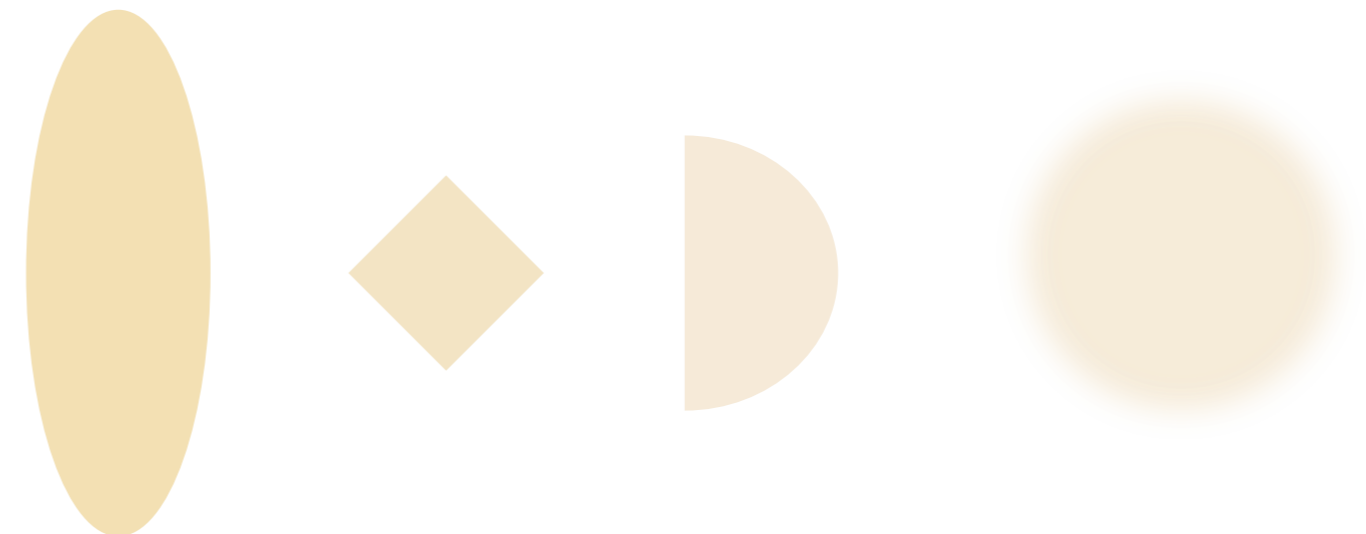
# Zero Projector Lighting Effect

## Precision light contouring

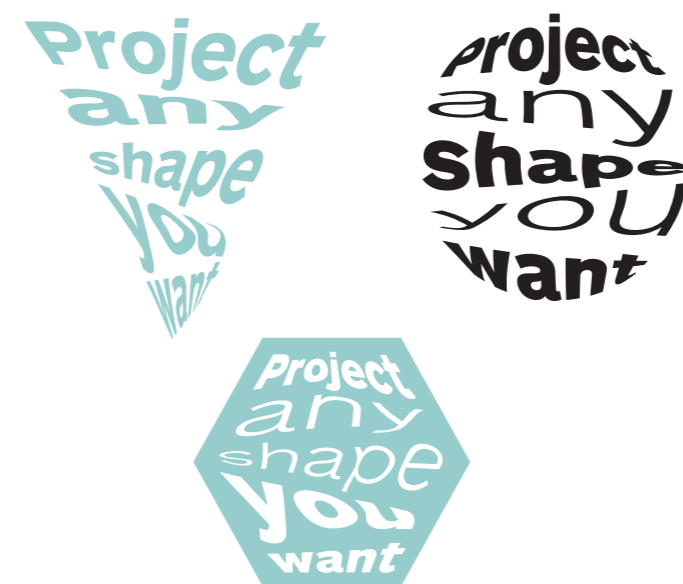


## Image Projection

CCTs Options

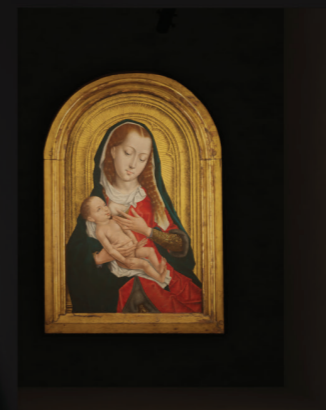
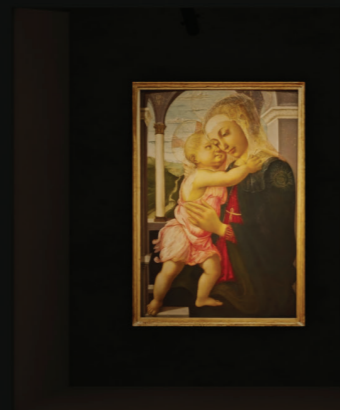


## Custom Graphics Projection



# Contour Spotlights

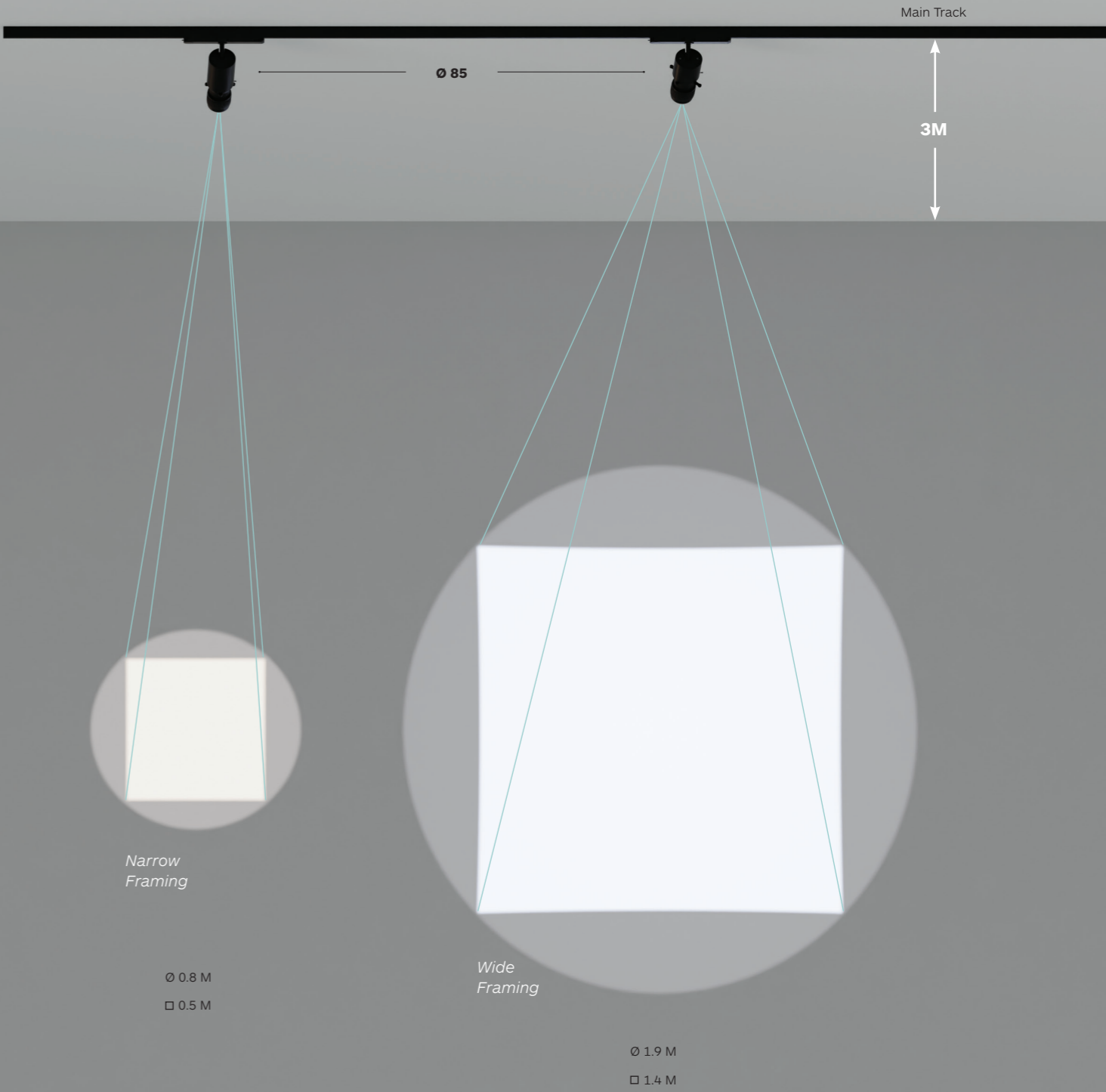
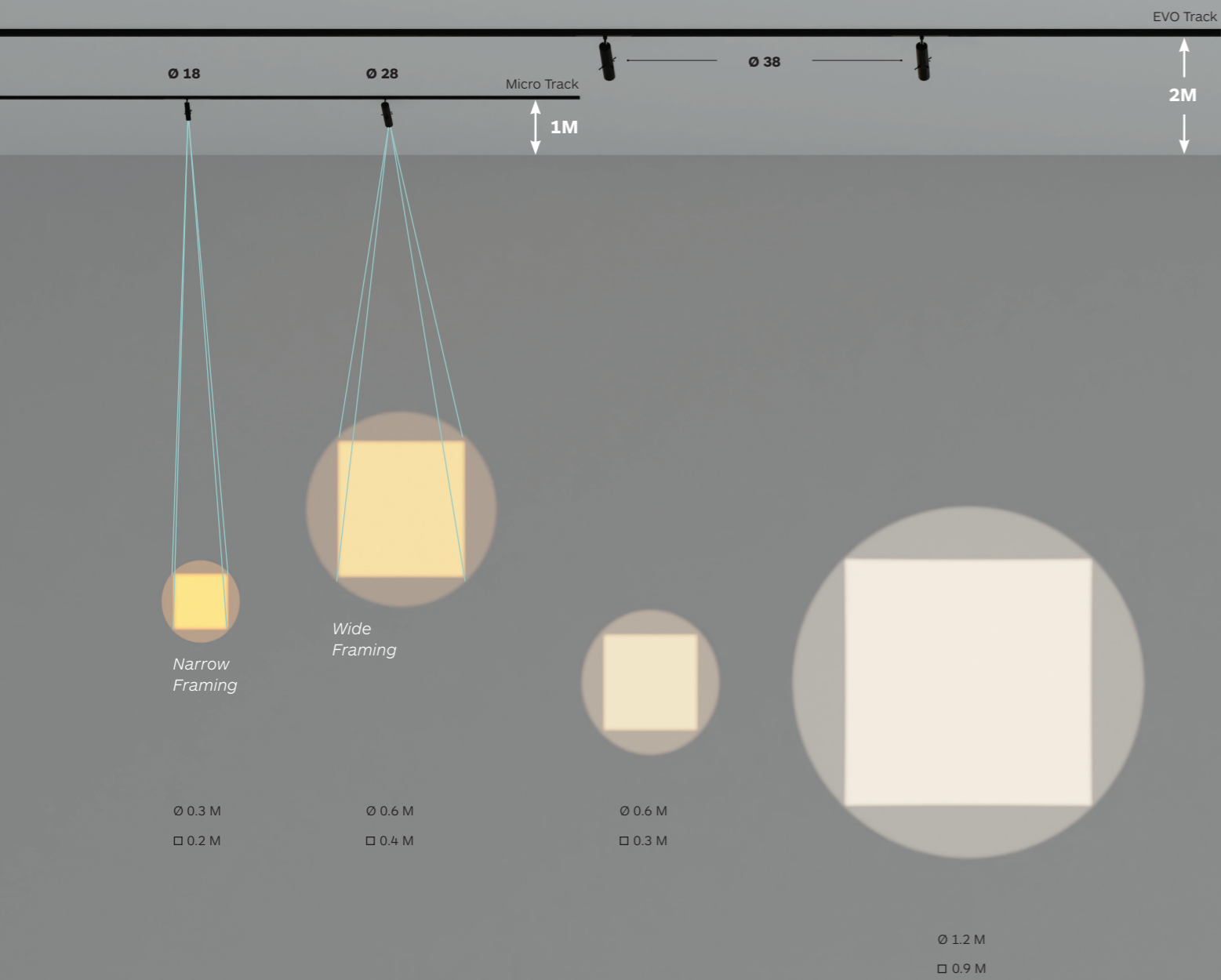
Create perfect displays of art  
in museums and galleries



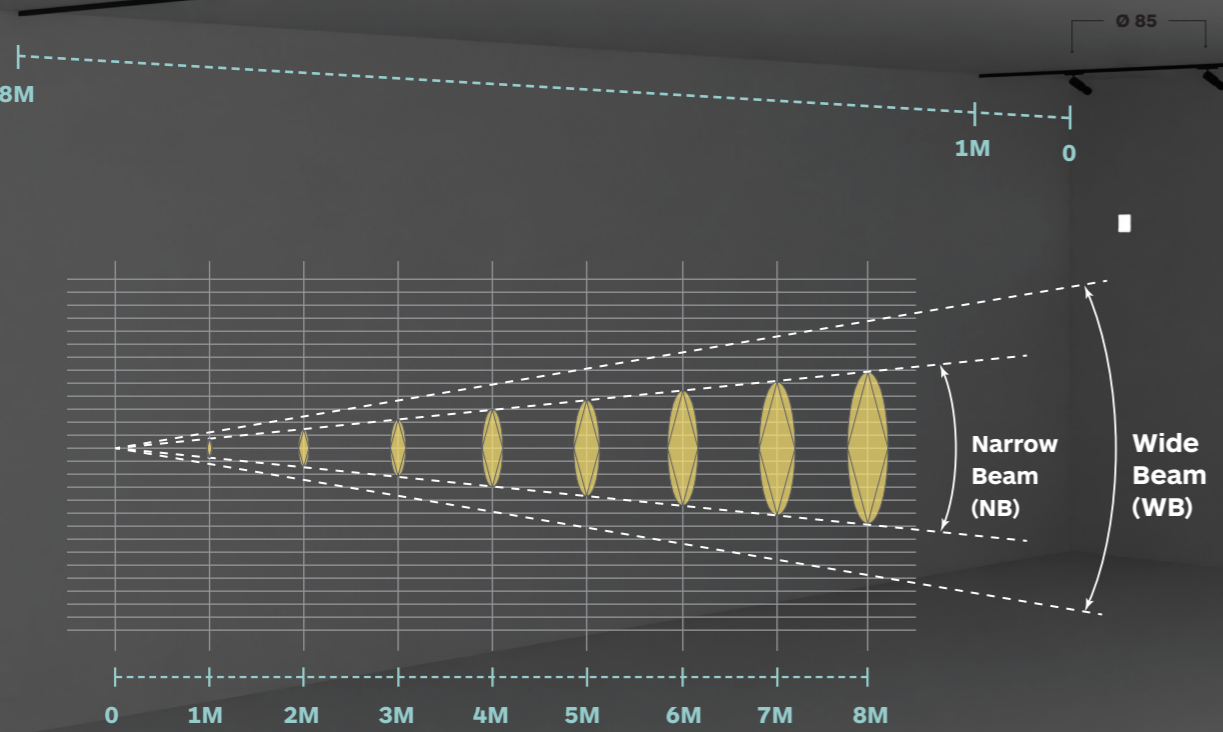
Our Zero Framing Projectors allow you to create beautiful lighting effects for your artwork.

Formalighting has created a solution with its contour spotlights. These allow curators and lighting designers to cast precise beams of light that highlight exhibits in galleries and museums while leaving the background in darkness for a magical effect. Unlike traditional projectors, which are limited to a single lighting style, our spotlights offer flexibility. You can easily switch from a framing light to a spotlight with a round beam without any tools.

# Framing Light Distribution



# Projection Spacing









Refer to this guideline to determine the appropriate circle of light diameter, light placement, or lens strength.



		Projection Distance (M)									
			1M	2M	3M	4M	5M	6M	7M	8M	
Zero Framing Projector 18 BS: Beam Shaping  Beam Angle: 15° - 33°	NB : 15°	Circular Spot Diameter (M)	Ø 0.3	Ø 0.6	Ø 0.9	Ø 1.2	-	-	-	-	
	WB : 33°		Ø 0.6	Ø 1.3	Ø 1.8	Ø 2.5	-	-	-	-	
	NB : 15°	Square Spot Side Length (M)	L 0.2	L 0.3	L 0.6	L 0.8	-	-	-	-	
	WB : 33°		L 0.4	L 0.9	L 1.3	L 1.7	-	-	-	-	
Zero Framing Projector 28 BS: Beam Shaping  Beam Angle: 12° - 32°	NB : 12°	Circular Spot Diameter (M)	Ø 0.3	Ø 0.5	Ø 0.8	Ø 1.0	Ø 1.2	Ø 1.5	Ø 1.7	-	
	WB : 32°		Ø 0.6	Ø 1.3	Ø 1.9	Ø 2.4	Ø 3.2	Ø 3.8	Ø 4.5	-	
	NB : 12°	Square Spot Side Length (M)	L 0.2	L 0.3	L 0.5	L 0.7	L 0.9	L 1.0	L 1.2	-	
	WB : 32°		L 0.4	L 0.9	L 1.4	L 1.8	L 2.3	L 2.7	L 3.2	-	
Zero Framing Projector 38 BS: Beam Shaping  Beam Angle: 14° - 35°	NB : 14°	Circular Spot Diameter (M)	Ø 0.3	Ø 0.6	Ø 0.9	Ø 1.2	Ø 1.5	Ø 1.8	Ø 2.2	Ø 2.5	
	WB : 35°		Ø 0.6	Ø 1.2	Ø 1.8	Ø 2.4	Ø 2.9	Ø 3.5	Ø 4.1	Ø 4.7	
	NB : 14°	Square Spot Side Length (M)	L 0.2	L 0.3	L 0.6	L 0.8	L 1.0	L 1.3	L 1.6	L 1.8	
	WB : 35°		L 0.4	L 0.9	L 1.3	L 1.6	L 2.1	L 2.5	L 2.9	L 3.3	

## Zero Framing Projector 85



Main Track: 1462 Surface: 6640		Main Track: 1463 Surface: 6641		Projection Distance (M)							
				1M	2M	3M	4M	5M	6M	7M	8M
BS: Beam Shaping  Beam Angle: 13° - 23°	<b>NB</b> : 13°		Circular Spot Diameter (M)	Ø 0.3	Ø 0.5	Ø 0.8	Ø 1.0	Ø 1.3	Ø 1.5	Ø 1.8	Ø 2.0
	<b>WB</b> : 23°			Ø 0.4	Ø 0.9	Ø 1.3	Ø 1.7	Ø 2.2	Ø 2.6	Ø 3.0	Ø 3.4
	<b>NB</b> : 13°		Square Spot Side Length (M)	L 0.2	L 0.4	L 0.5	L 0.7	L 0.9	L 1.1	L 1.3	L 1.4
	<b>WB</b> : 23°			L 0.3	L 0.6	L 0.9	L 1.2	L 1.5	L 1.8	L 2.1	L 2.4
BW: Beam Wide  Beam Angle: 23° - 36°	<b>NB</b> : 23°		Circular Spot Diameter (M)	Ø 0.4	Ø 0.8	Ø 1.2	Ø 1.6	Ø 2.0	Ø 2.4	Ø 2.8	Ø 3.2
	<b>WB</b> : 36°			Ø 0.6	Ø 1.3	Ø 1.9	Ø 2.6	Ø 3.2	Ø 3.9	Ø 4.5	Ø 5.2
	<b>NB</b> : 23°		Square Spot Side Length (M)	L 0.3	L 0.6	L 0.8	L 1.1	L 1.4	L 1.7	L 2.0	L 2.3
	<b>WB</b> : 36°			L 0.5	L 0.9	L 1.4	L 1.8	L 2.3	L 2.8	L 3.2	L 3.7

# Optical Accessory Gobo Film

A zero-framing projector, a gobo, and a projection surface are all required for logo projection. The gobo is a little template film that displays a customized logo or other creative image.

The gobo film is inserted into the Zero Framing projector, and the picture emerges on the ideal surface. Choose the appropriate gobo for your design and projector to achieve a clear image at the correct size and brightness.



Gobo  
Film



Gobo Film  
available for 4 sizes

1. Zero Framing Projector 85



2F29

2. Zero Framing Projector 38



2G24

3. Zero Framing Projector 28



2G92

4. Zero Framing Projector 18



2G91

# PRODUCTS INDEX

## Recessed & Semi-Recessed



Ø 38  
P. 18



Ø 18  
Ø 28  
Ø 38  
P. 18

## Surface Mounted

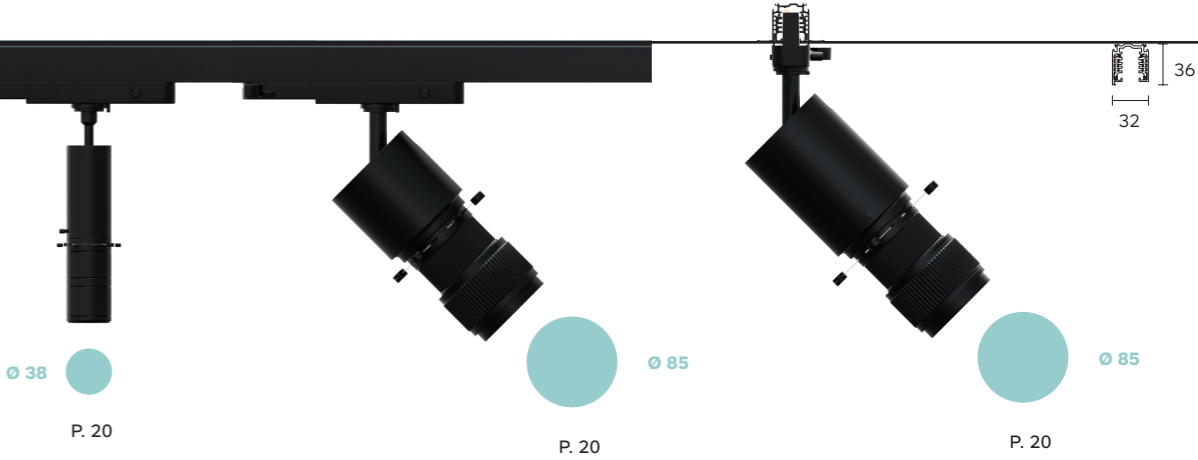


Ø 18  
Ø 28  
Ø 38  
P. 28-30



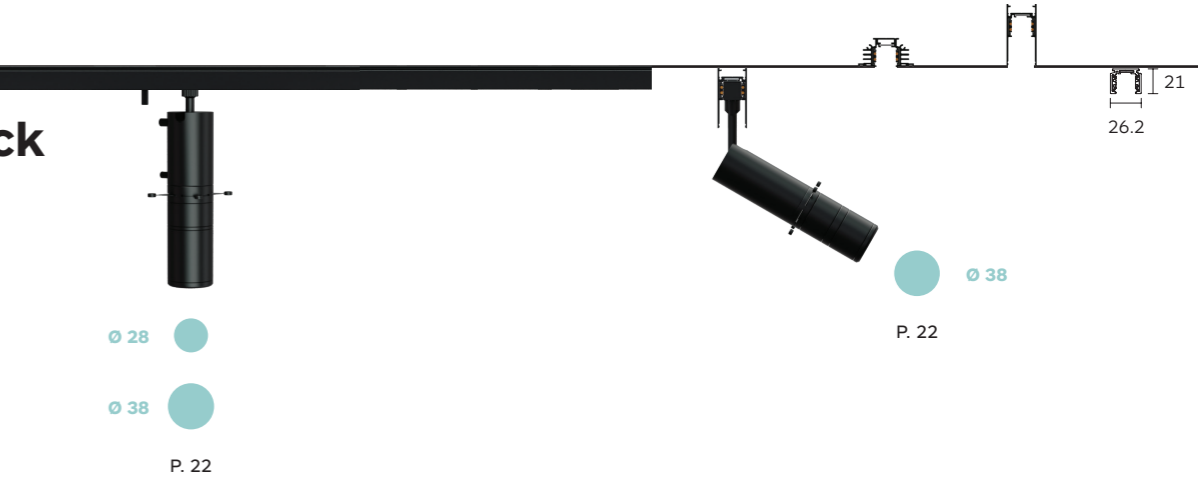
Ø 85  
P. 28

## Main Voltage Track



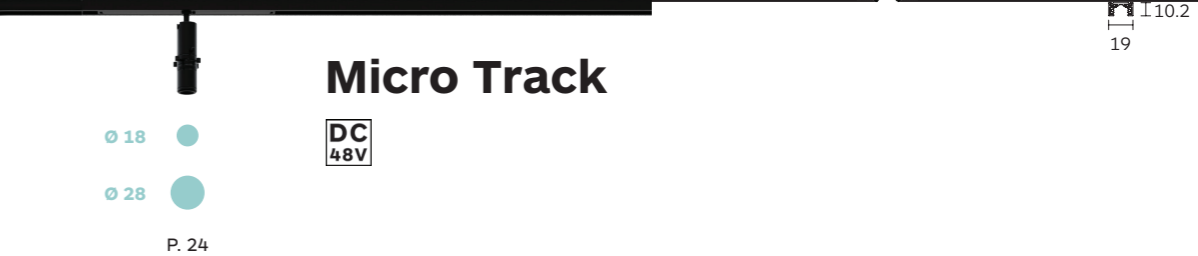
## EVO Track

DC 48V



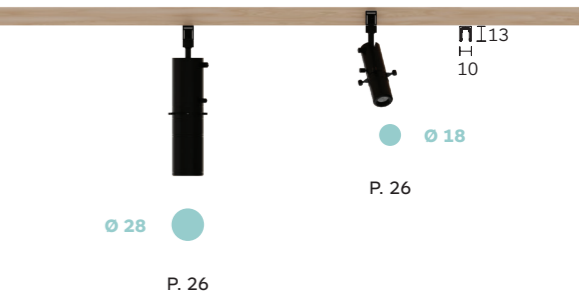
## Micro Track

DC 48V



## Mini Track

DC 24V



# Zero Framing Projector

Semi Recessed & Recessed

Advanced, multi-functional LED semi-recessed and recessed mounted projector. With a built-in bidirectional zooming lens with sharpness adjustability, and lens rotation.

Adjustable shutters to re-frame the beam to the desired size and shape. Compatible with Gobo insertion for logo. High-precision optics for sharp outlines and high degree of lighting uniformity.

For complete code ordering information, please see page 35.

LED Sources:

High Rendering:  
CRI: 97 | CCT: 2700K, 3000K, 3500K, 4000K.

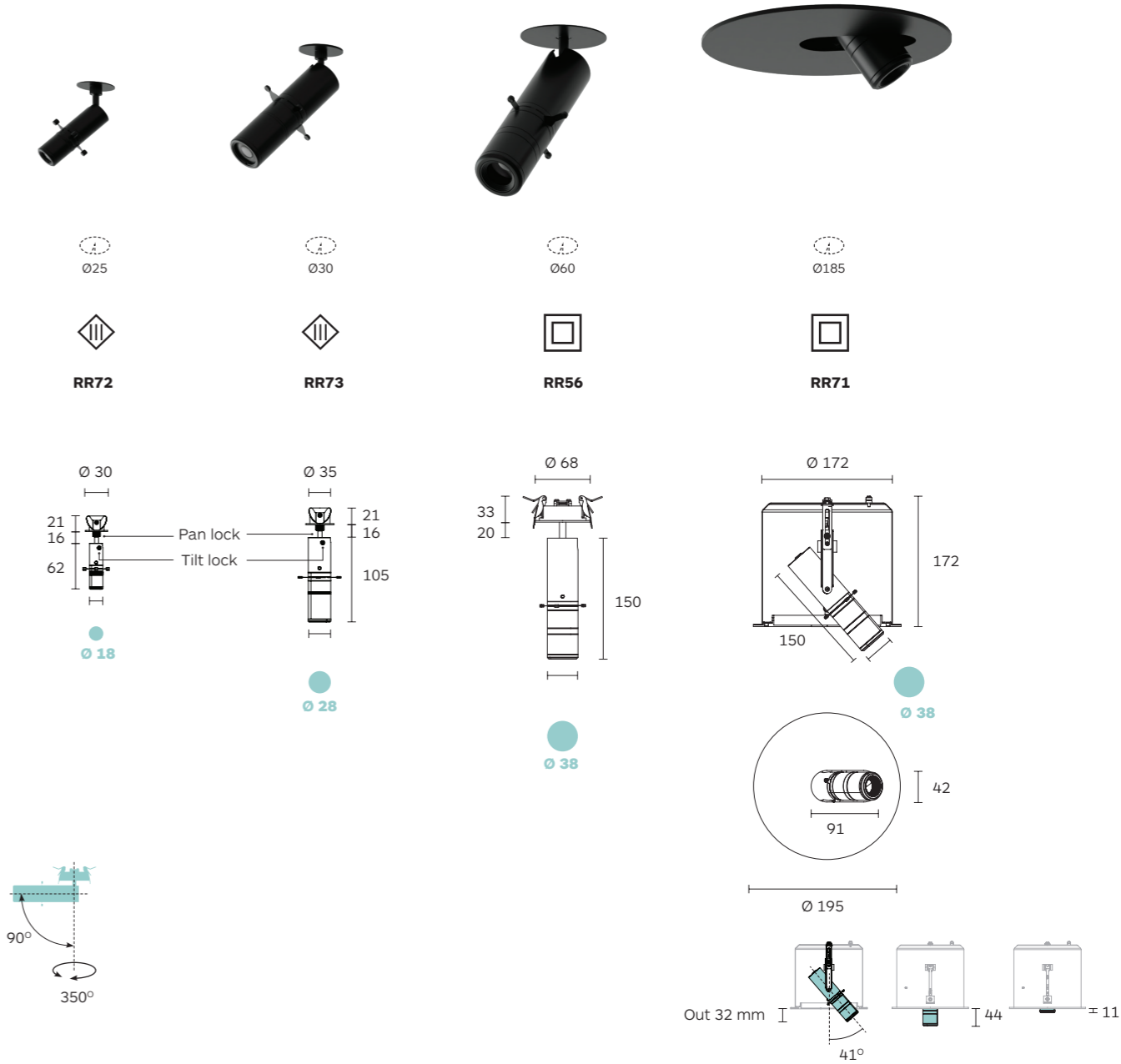
Accessories:

- Gobo Film, see page 15 for details
- Contact us for custom-made logo projection lens.

- 10 - Black
- 11 - White



## Zero Framing Projector Semi-Recessed & Recessed



		Product Code	LED Source Code	LED Power	Nominal Lumen	Beam Angle	Dimming Options	CCT Options
<div>CRI&gt;97 3000K</div> <div>High Rendering</div>	Zero Framing Projector 18	RR72	BC52	2.4	205 lm	BS (15°-35°)	D0 No Dim	27 2700K
	Zero Framing Projector 28	RR73	BC53	4.8	470 lm	BS (11°-32°)	D1 0-10V Dim	30 3000K
	Zero Framing Projector 38	RR56	BC42	9.6W	922 lm	BS (14°-35°)	DC* CASAMBI	35 3500K
		RR71					DA* Dali Dim	40 4000K
							DP* Phase Dim	

\* Dimming Options Dali Dim (DA), CASAMBI (DC) and Phase Dim (DP) are available for Zero Framing Projector 38 only.  
BS: Beam Shaping.

# Zero Framing Projector

Track

- 10 - Black
- 11 - White

Advanced, multi-functional LED track mounted projector, tiltable vertically 0°-90° and rotatable horizontally 350°. With built-in bidirectional zooming lens with sharpness adjustability, and lens rotation.

Adjustable shutters to re-frame the beam to the desired size and shape (circle, square/rectangle, or irregular four-sided shapes). Compatible with Gobo insertion for logo.

High-precision optics for sharp outlines and high degree of lighting uniformity.

For complete code ordering information, please see page 35.

LED Sources:

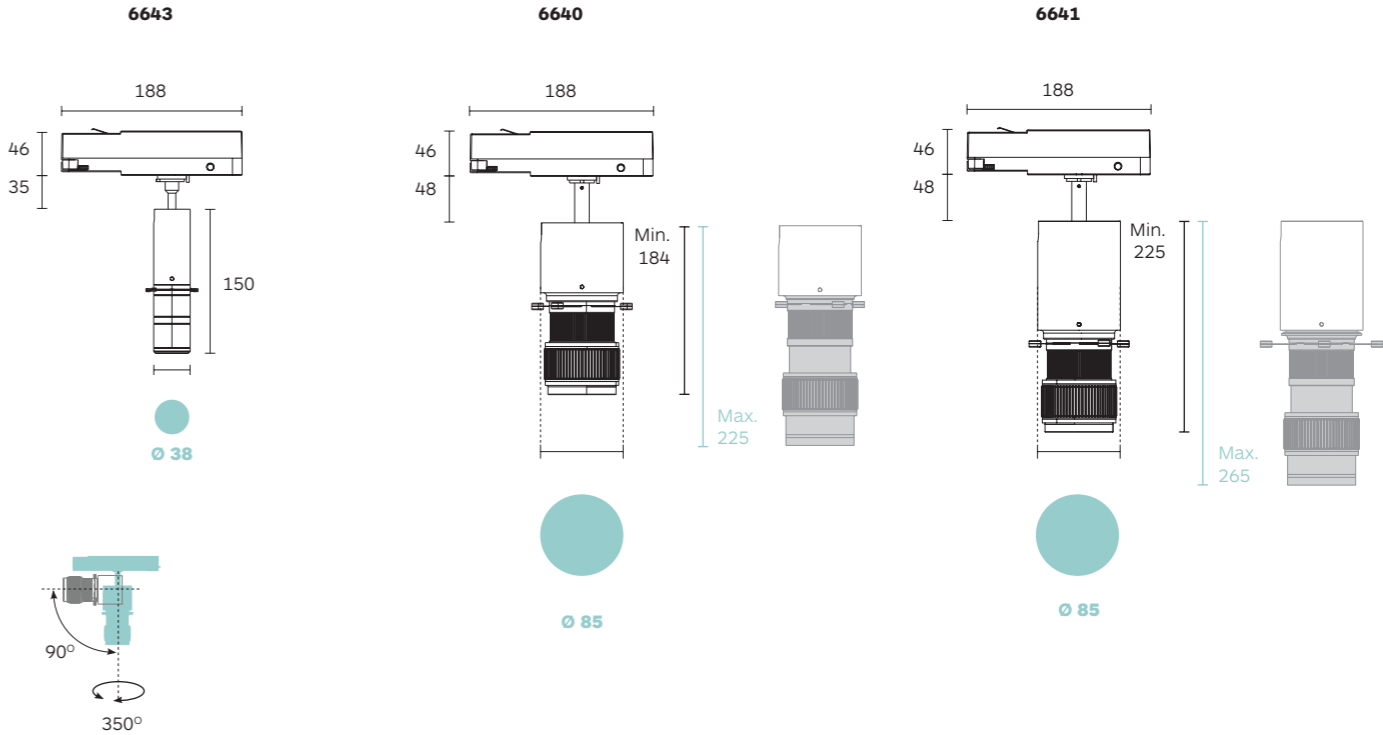
High Rendering:  
CRI: 97 | CCT: 2700K, 3000K, 3500K, 4000K.

Accessories:

- Gobo Film, see page 15 for details
- Contact us for custom-made logo projection lens.



## Zero Framing Projector Track



	Product Code	LED Source Code	LED Power	Nominal Lumen	Beam Angle	Dimming Options	CCT Options
<div>CRI&gt;97 3000K High Rendering</div>	Zero Framing Projector 38	6643	BC42	9.6W	848 lm	BS (14°-35°)	27 2700K
	Zero Framing Projector 85	6640	BC32	17W	1764 lm	BS (13°-23°)	30 3000K
		6641		25W	2332 lm	BW (23°-36°)	35 3500K
						DN On Board Dimmer	40 4000K

BS: Beam Shaping; BW: Beam Wide.

# Zero Framing Projector

EVO 48V Track

- 10 - Black
- 11 - White

LED Sources:

High Rendering:  
CRI: 97 | CCT: 2700K, 3000K, 3500K, 4000K

Accessories:

- Gobo Film, see page 15 for details.  
Contact us for custom-made logo projection lens.

Zero 38 framing projector is an advanced, multi-functional EVO 48V track-mounted projector, tiltable vertically 0°-90° and rotatable horizontally 360°. With built-in bidirectional zooming lens with sharpness adjustability, and lens rotation. Available in regular and long arm version for deep recessed and pendant EVO 48V track.

Fully adjustable shutters to reframe the beam to the desired size and shape (circle, square/rectangle, or irregular four-sided shapes). Compatible with Gobo insertion for logo.  
High-precision optics for sharp outlines and a high degree of lighting uniformity.

For complete code ordering information, please see page 35.

# Zero Framing Projector EVO Track

DC 48V

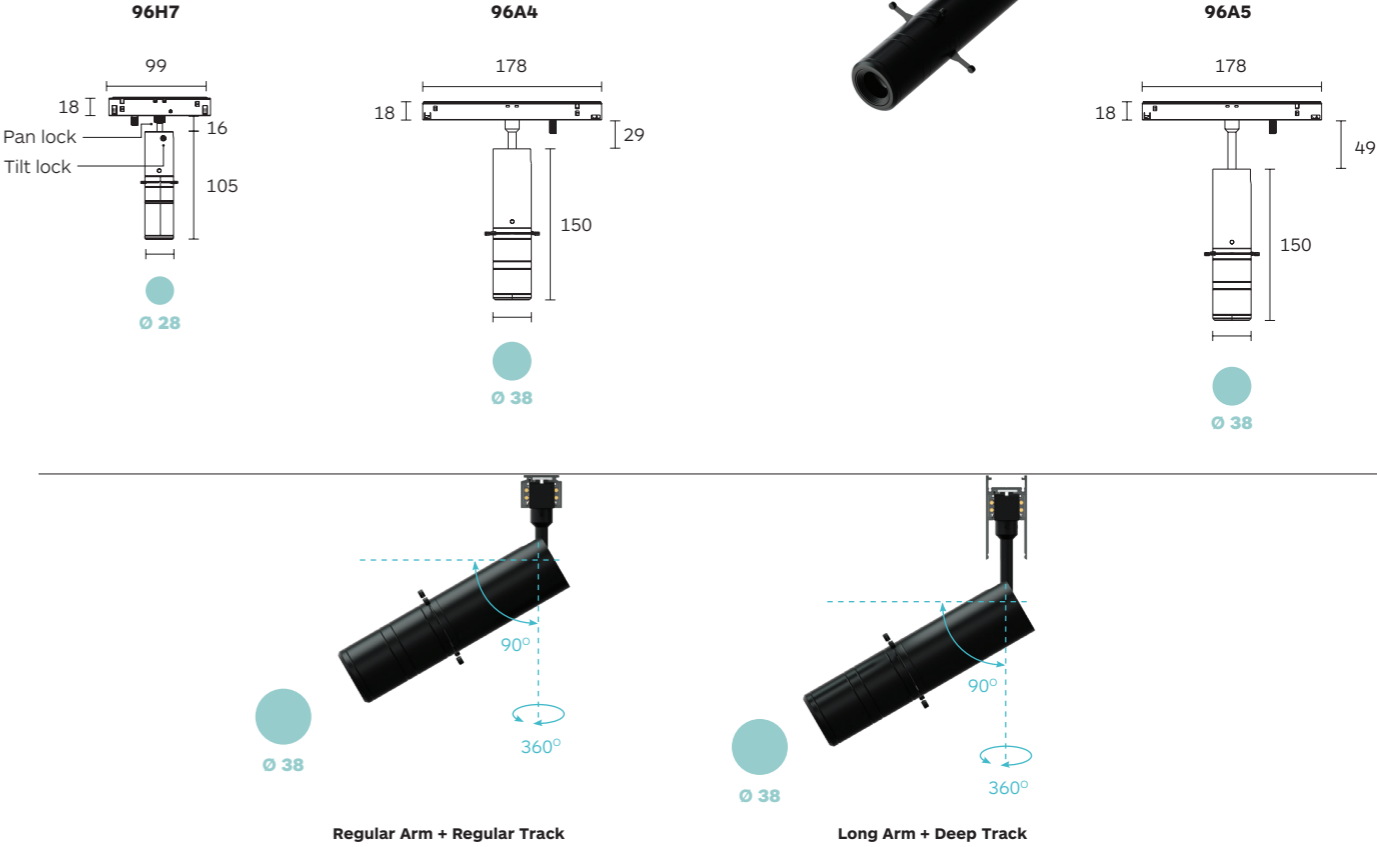
IP20

10

11

Regular Arm + EVO Regular Track

Long Arm + EVO Deep Track



		Product Code	LED Source Code	LED Power	Nominal Lumen	Beam Angle	Dimming Options	CCT Options
<div>CRI&gt;97 3000K</div> <div>High Rendering</div>	Zero Framing Projector 28	96H7	BC53	4.8	470 lm	BS (11°-32°)	D0 No Dim	27 2700K
	Zero Framing Projector 38	96A4	BC42	9.6W	848 lm	BS (14°-35°)	DA Dali Dim	30 3000K
	Zero Framing Projector 38 Long Arm	96A5					DC CASAMBI	35 3500K
							DN On Board Dimmer	40 4000K

BS: Beam Shaping.

# Zero Framing Projector

## Micro Track

Advanced, multi-functional LED track-mounted projector, tiltable vertically 0°-90° and rotatable horizontally 350°. With built-in bidirectional zooming lens with sharpness adjustability, and lens rotation. Adjustable shutters to re-frame the beam to the desired size and shape (circle, square/rectangle, or irregular four-sided shapes).

Compatible with gobo insertion for the logo. High-precision optics for sharp outlines and high degree of lighting uniformity.

For complete code ordering information, please see page 35.

**LED Sources:**  
High Rendering:  
CRI: 97 | CCT: 2700K, 3000K, 3500K, 4000K.

**Accessories:**  
• Gobo Film, see page 15 for details.  
Contact us for custom-made logo projection lens.

- 10 - Black
- 11 - White

# Zero Framing Projector

## Micro Track

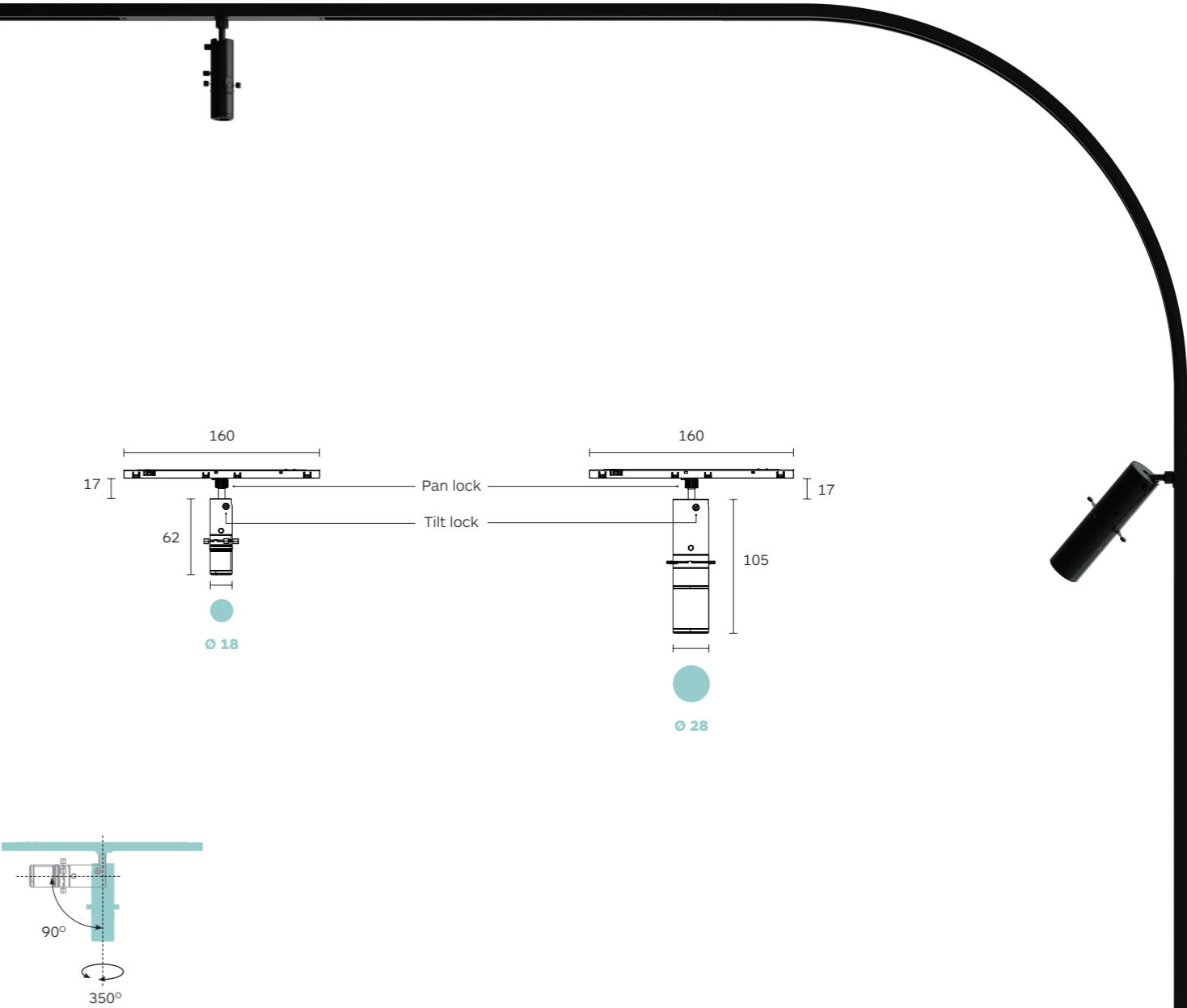
DC  
48V

IP20

CE

10

11



		Product Code	LED Source Code	LED Power	Nominal Lumen	Beam Angle	Dimming Options	CCT Options
<div>CRI&gt;97 3000K</div> <div>High Rendering</div>	Zero Framing Projector 18	T674	BC52	2.4	205 lm	BS (15°-35°)	D0 No Dim	27 2700K
	Zero Framing Projector 28	T650	BC53	4.8	470 lm	BS (11°-32°)	DA Dali Dim	30 3000K
							DC CASAMBI	35 3500K 40 4000K

BS: Beam Shaping.

# Zero Framing Projector

Mini Track

- 10 - Black
- 11 - White



For galleries and museums, the Zero Framing Projectors 18 & 25 are professional micro spotlights that guarantee exception illumination for even the smallest of artefacts.

Designed to suit a range of needs, Zero Framing Projectors 18 & 25 are available for 24v mini track, tiltable vertically 0°-90° and rotatable horizontally 330°. With built-in bidirectional zooming lens with sharpness adjustability, and lens rotation. Adjustable shutters to re-frame the beam to the desired size and shape.

Compatible with Gobo insertion for logo. High-precision optics for sharp outlines and a high degree of lighting uniformity.

For complete code ordering information, please see page 35.

LED Sources:

High Rendering:  
CRI: 97 | CCT: 2700K, 3000K, 3500K, 4000K.

Accessories:

- Gobo Film, see page 15 for details.  
Contact us for custom-made logo projection lens.

# Zero Framing Projector Mini Track

DC  
24V

330°

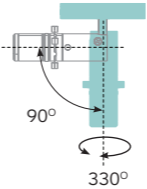
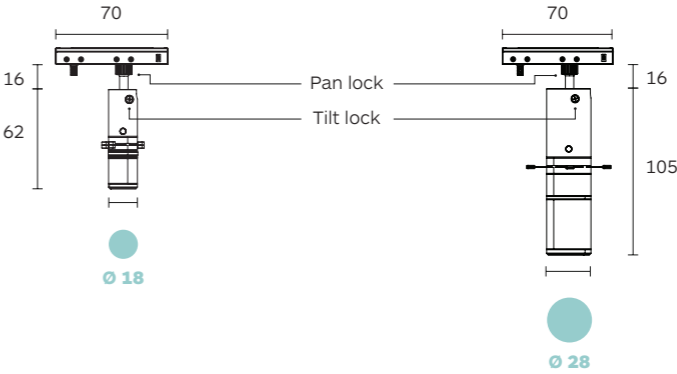
90°

IP20

CE

10

11



		Product Code	LED Source Code	LED Power	Nominal Lumen	Beam Angle	Dimming Options	CCT Options
<div>CRI&gt;97 3000K</div> <div>High Rendering</div>	Zero Framing Projector 18	G96C	BC52	2.4	205 lm	BS (15°-35°)	D0 No Dim	27 2700K
	Zero Framing Projector 28	G96D	BC53	4.8	470 lm	BS (11°-32°)	D1 0-10V Dim	30 3000K
							DN On Board Dimmer	35 3500K
								40 4000K

BS: Beam Shaping.

# Zero Framing Projector

Surface 38 | 85

- 10 - Black
- 11 - White



Advanced, multi-functional LED surface-mounted projector, tilttable vertically 0°-90° and rotatable horizontally 350°. With built-in bidirectional zooming lens with sharpness adjustability, and lens rotation. Available in 38mm and 85mm. Adjustable shutters allow you to re-frame the beam to the desired size and shape.

Compatible with gobo insertion for the logo. High-precision optics for sharp outlines and a high degree of lighting uniformity.

For complete code ordering information, please see page 35.

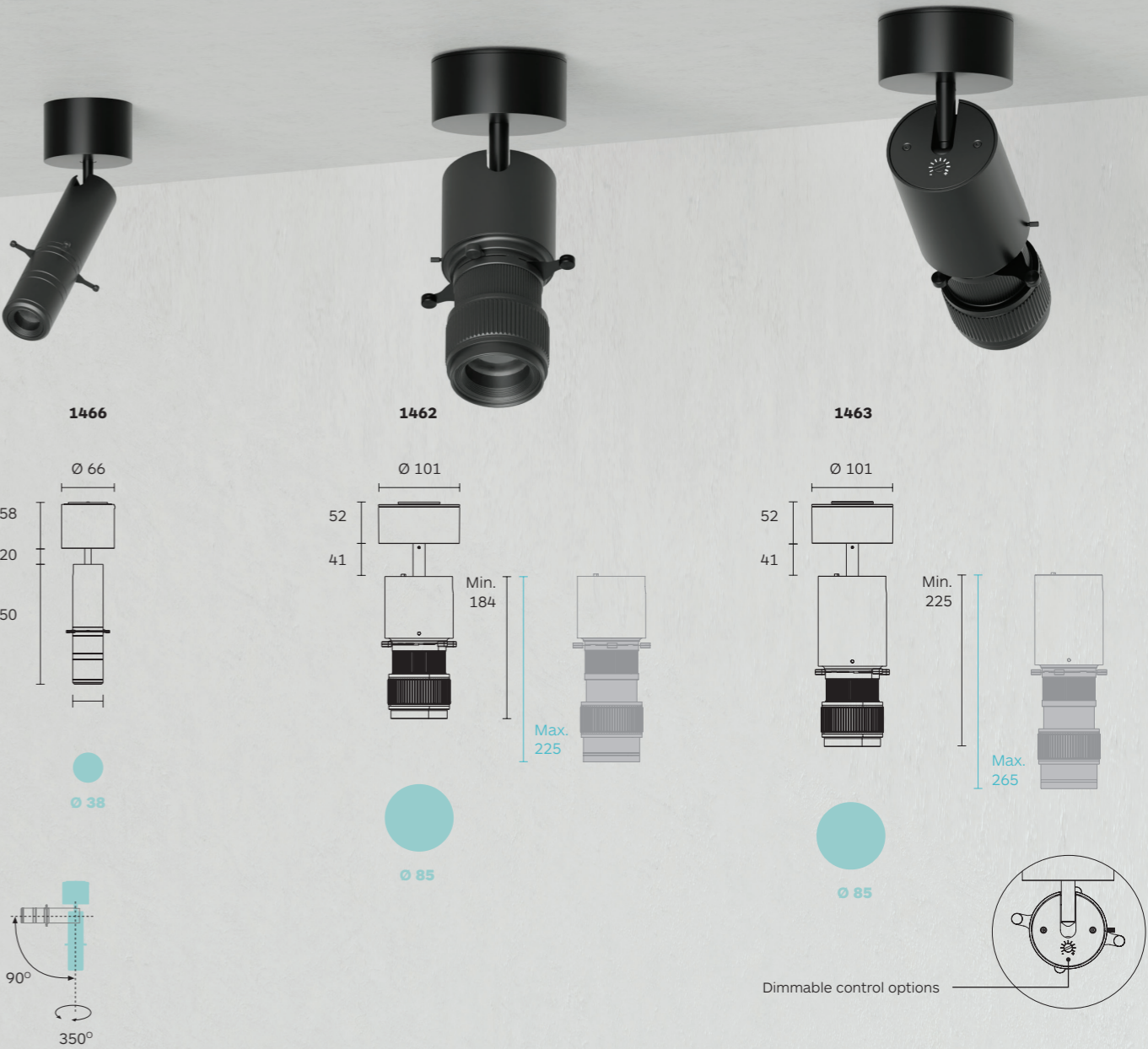
LED Sources:

High Rendering:  
CRI: 97 | CCT: 2700K, 3000K, 3500K, 4000K.

Accessories:

- Gobo Film, see page 15 for details.
- Contact us for custom-made logo projection lens.

## Zero Framing Projector 38 & 85 Surface



	Product Code	LED Source Code	LED Power	Nominal Lumen	Beam Angle	Dimming Options	CCT Options
CRI>97 3000K High Rendering	Zero Framing Projector 38	1466	BC42	9.6W	848 lm	BS (14°-35°)	27 2700K
	Zero Framing Projector 85	1462	BC32	17W	1764 lm	BS (13°-23°)	30 3000K
		1463		25W	2332 lm	BW (23°-36°)	35 3500K
						DN* On Board Dimmer	40 4000K

\* Dimming Options On Board Dimmer (DN) is available for Zero Framing Projector 85 only.  
\* Dimming Options Dali Dim (DA) & CASAMBI (DC) are only available via external Drivers.  
BS: Beam Shaping; BW: Beam Wide.

# Zero Framing Projector

Surface 18 | 28



The compact surface-mounted projector works with a low-voltage power supply. Tilttable vertically 0°-90° and rotatable horizontally 350°. With a built-in bidirectional zooming lens with sharpness adjustability, and lens rotation. Available in 28mm and 18mm. Adjustable shutters allow you to re-frame the beam to the desired size and shape.

Compatible with gobo insertion for the logo. High-precision optics for sharp outlines and a high degree of lighting uniformity. An ultra-compact design ideal for showcase and display lighting applications.

For complete code ordering information, please see page 35.

- LED Sources:**

High Rendering:  
CRI: 97 | CCT: 2700K, 3000K, 3500K, 4000K.
- Accessories:**

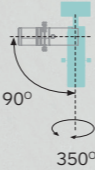
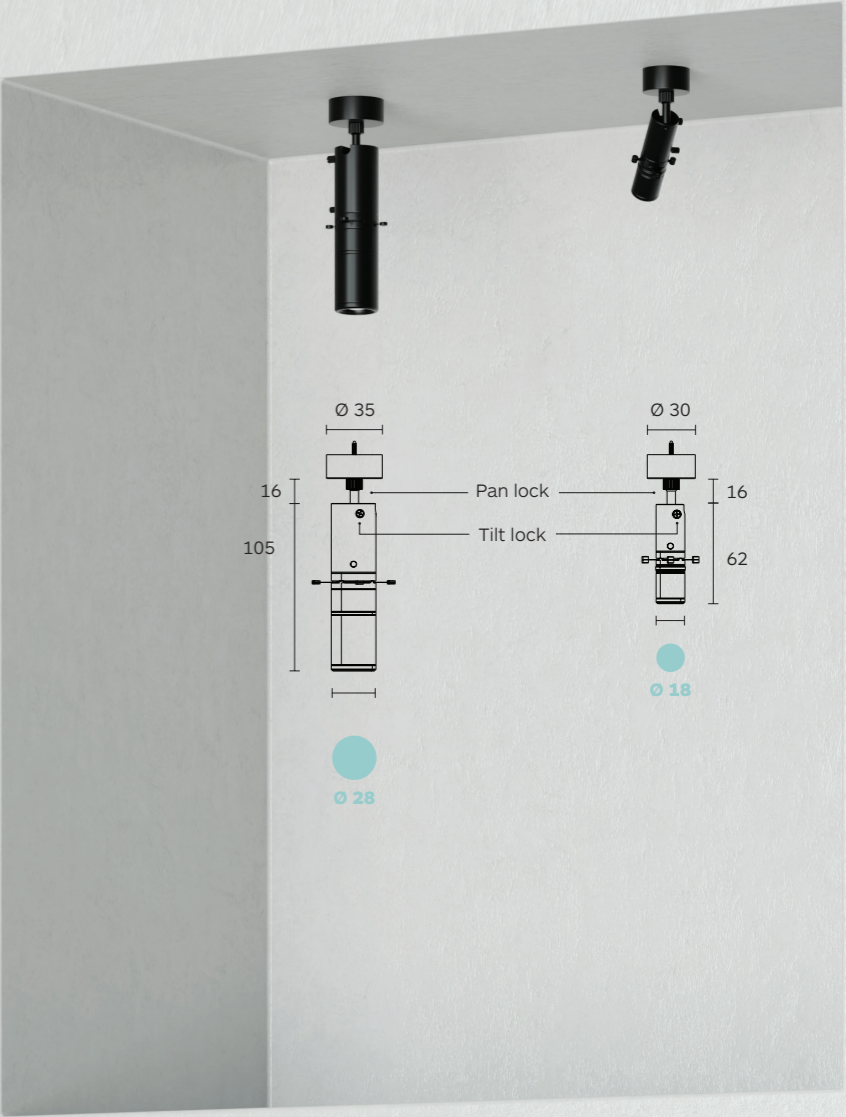
  - Gobo Film, see page 15 for details.
  - Contact us for custom-made logo projection lens.

- 10 - Black
- 11 - White

## Zero Framing Projector 18 & 28 Surface

10

11



	Product Code	LED Source Code	LED Power	Nominal Lumen	Beam Angle	Dimming Options	CCT Options
<div>CRI&gt;97 3000K</div> <div>High Rendering</div>	Zero Framing Projector 18	1491	BC52	2.4	205 lm	BS (15°-35°)	27 2700K
	Zero Framing Projector 28	1492	BC53	4.8	470 lm	BS (11°-32°)	30 3000K
							35 3500K
							40 4000K

\* Dimming Options 0-10V Dim (D1) available via external Drivers.  
BS: Beam Shaping.

**Symbols & Icons**  
**Code system**  
**Global presence**

Symbols & Icons

Trim Round



Round ceiling cut



CE Mark - Product complies with CE Standard.



CSA Mark - Product complies with USA & Canada Standard.



**CLASS I**  
Luminaires of insulation Class I - with earth connector.



**CLASS II**  
Luminaires of insulation Class II - With safety isolation, this means the tension conductions element are protected by additional isolation.  
The isolation of an earth wire it is not necessary and the connection to it is not allowed.



**CLASS III**  
Luminaires of isolation Class III - designed for operation of protected low voltage supply (>42V).



48V input integrated.



24V input integrated.



CASAMBI



Recyclable



IP\_\_ Degree of Ingress Protection



1st Number	Protection Against Dust and Solid Objects	2nd Number	Protection Against Moisture and Liquids
0	No-Protection	0	No-Protection
1	Protection against solid objects >50 mm	1	Protection against dripping water
2	Protection against solid objects >12 mm	2	Protection against dripping water tilted > 15 deg
3	Protection against solid objects >2.5 mm	3	Protection against spraying water > 30 deg
4	Protection against solid objects >1 mm	4	Protection against spraying water
5	Dust - protected	5	Protection against water jet
6	Dust - tight	6	Protection against waves
		7	Protection against the effects of immersion
		8	Protection against submersion

Body Color



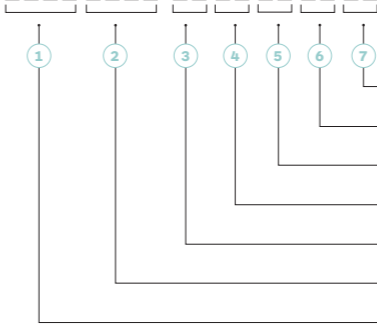
10 Black (RAL 9004)



11 White (RAL 9003)

Code System

Code ordering example: **G 9 6 D B C 5 3 - 9 7 3 0 B S D 0 1 1**



- 7 Body colour
- 6 Dimming & Box Type Options
- 5 Beam angle
- 4 CCT-LED colour temperature
- 3 LED CRI
- 2 LED Module code
- 1 Product code

LED CRI

**97** CRI > 97

CCT-LED Colour temperature

- 27** Warm White 2700K
- 30** Warm White 3000K
- 35** Warm White 3500K
- 40** Warm White 4000K

Dimming Options

- D0** No Dim
- D1** 0-10V Dim
- DA** Dali Dim
- DC** CASAMBI
- DN** On Board Dimmer
- DP** Phase Dim

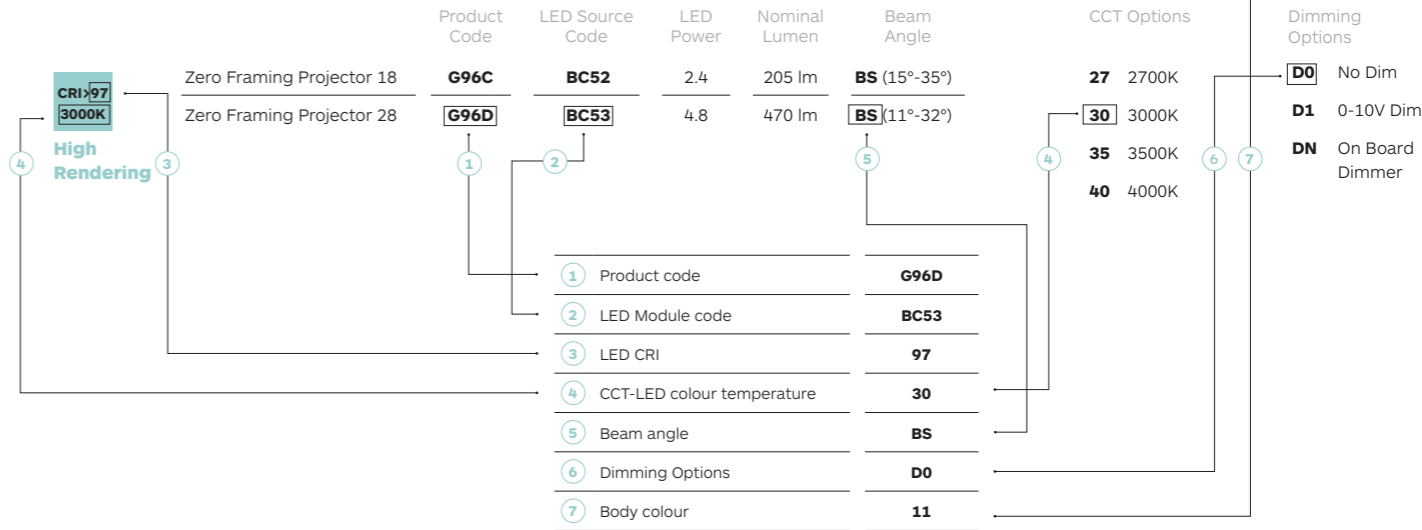
Body Colour

- 10** Black (RAL 9004)
- 11** White (RAL 9003)

How to order



- 10** - Black
- 11** - White



# Global presence

Celebrating over 50 years of vision, dedication and innovation, formalighting's versatile and high-quality product offerings extends internationally via our headquarters in Hong Kong, London, Milan and Shanghai. Our well chosen and selected partners as well as our affiliated international offices broaden our global presence further in markets such as USA, Australia, Japan, South East Asia, India and the Middle East.

Through our commitment to growth and investment within formalighting's professional team, infrastructure and product ranges, we are able to provide increasing service to our global retail and hospitality clients as well as lighting designers and specifiers strengthening our position as a leading international supplier of innovative architectural lighting solutions and systems.

With over 50 years' experience in designing and manufacturing architectural lighting, formalighting's comprehensive portfolio offers a competitive range of European designed and expertly engineered products that carry CB, CE, CCC and UL certifications.

Furthermore formalighting's latest award-winning motorized range of track, pendant, and recessed fixtures, featuring remote-controlled adjustable pan and tilt, dim, dim to warm, tuneable white and beam shaping lens, are available worldwide incorporating the latest, most advanced lighting technologies.

## MILAN

### EUROPE HEADQUARTERS

Tel ( +39 ) 02 9354 0300

Fax ( +39 ) 02 9343 5117

E- mail info-europe@formalighting.com

## HONG KONG

### ASIA HEADQUARTERS

Tel ( + 852 ) 2516 6500

Fax ( + 852 ) 2516 6525

E- mail info-asia@formalighting.com

## NEW YORK

### LOCAL SALES OFFICE

E- mail info-us@formalighting.com

## SHANGHAI

### LOCAL SALES OFFICE

E- mail info-china@formalighting.com

## LONDON

### LOCAL SALES OFFICE

E- mail info-uk@formalighting.com

## AUSTRALIA

### LOCAL SALES OFFICE

Tel ( +61 ) 488 567 388

E- mail info-australia@formalighting.com

## INDIA

### LOCAL SALES OFFICE

Tel ( +91 ) 9686351257

E- mail info-india@formalighting.com

formalighting is constantly developing and improving its products therefore all information, drawings illustrations, specifications, photometric values in this catalogue are indicatives and shall not form part of any commitment by our company that reserves the right to change specifications without prior notification or public announcement. Technical information on the installation-instruction has precedence over the information in the catalogue.

Our general terms and conditions shall apply notwithstanding any stipulation on the contrary to all the orders and agreement with formalighting. You can obtain a copy of these conditions on demand.

Publication date: January 2025  
©Copyright formalighting

With thanks to all contributors for the realization of this catalogue

Designed by formalighting's Graphic Design Department

No part of this catalogue may be copied without written authorization of formalighting



Zero Framing Projector Series 2025

formalighting

HONG KONG

-

LONDON

-

MILAN

-

SHANGHAI

-

USA

[www.formalighting.com](http://www.formalighting.com)